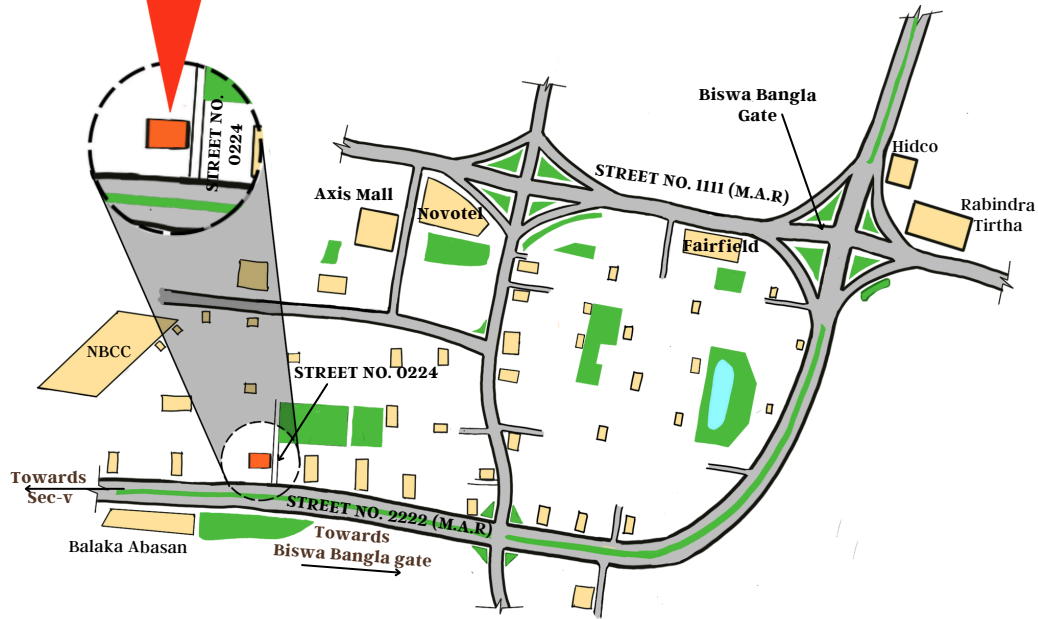


Proposed Site



Prem. No. 06-0224
Plot No. CE/1/B/60
Street No.- 0224
New Town, Kolkata

The site is close to Axis Mall, Novotel, Tata Medical Center, & Five minutes away from Biswa Bangla Gate & Rabindra Tirtha.

Developed By:
Delta Infraheights

+91 6291863475
 sales@deltainfraheights.in



Architect & Engineer:
Delta Consultants
 www.deltaconsultants.design



BED ROOM



PARKING AREA



BATH ROOM

Plot Detail:
 Prem. No. 06-0224
 Plot No. CE/1/B/60
 Street No.- 0224
 New Town, Kolkata

VISIT
CE/1/B/60

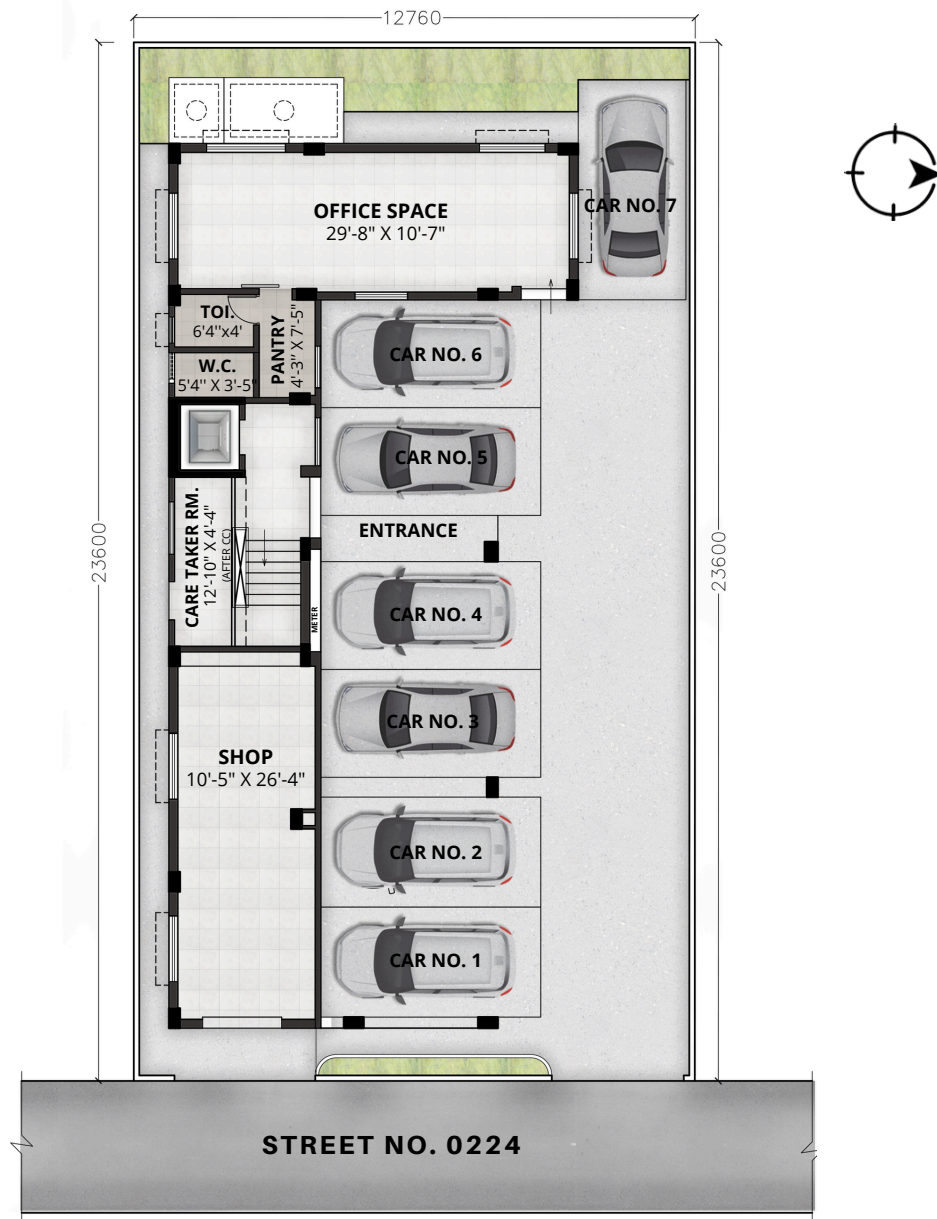


+91 6291863475
 CF-154, Salt Lake City, Sec-I, Kolkata
 www.deltaconsultants.design



CLICK HERE

GROUND FLOOR PLAN



SHOP: Super Built-Up Area - 402 Sqft.
OFFICE: Super Built-Up Area - 525 Sqft.



SPECIFICATION

ELECTRICALS

- Modular switches of reputed make.
- AC points in all rooms and for Living/Dining.
- Necessary electrical points with switches in all bedrooms, Living/ Dining, Kitchen and Toilets.
- Concealed copper wiring with Central MCB of reputed make.

FLOORING

- Internal Flooring:
- Vitrified Tiles in Bedrooms (4'x2') , Living & Dining, (4'x2')
- Stair & Lift Lobby with Marble.
- Antiskid Ceramic Floor Tiles in Kitchen & Toilet
- External Flooring:
- Parking Tiles/Paver Block in Driveway & Garage.

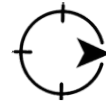
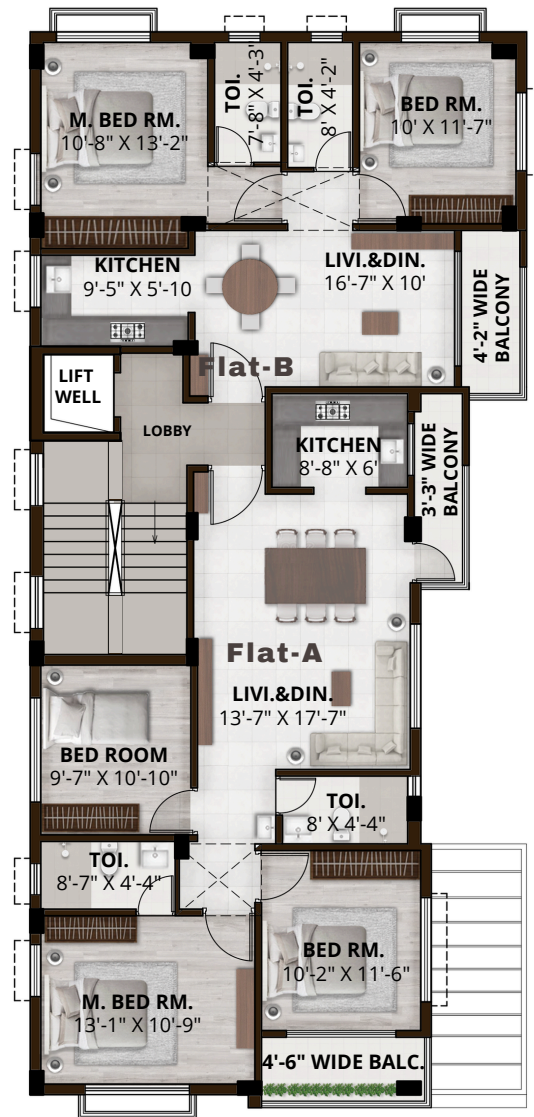
KITCHEN

- Stainless steel sink.
- Dado: Ceramic tiles up to 2 feet above the counter.
- Granite Kitchen Counter.
- Sufficient power point for Electrical Fixtures.
- Granite Molded window matching with the counter top.

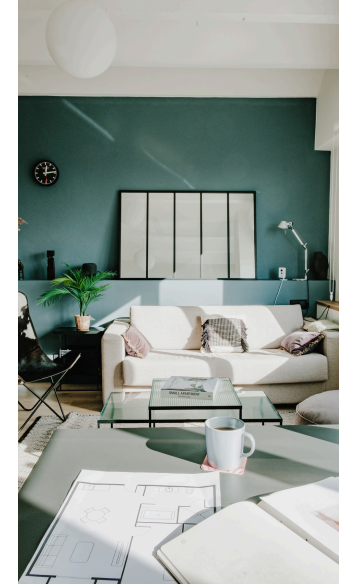
TOILET

- Anti-skid/ Matte finish ceramic tiled floor.
- Dado : Ceramic wall tiles up to door heights.
- White sanitary ware of reputed make.
- CP fittings of reputed make.
- Provision for Geyser, Exhaust Fan.
- Plumbing provision for hot & cold lines with CPVC pipes.

TYPICAL 1st TO 4TH FLOOR PLAN



FLAT-A : Super Built-Up Area - 1342 Sqft.
FLAT-B : Super Built-Up Area - 965 Sqft.



SPECIFICATION

COMMON AMENITIES

- Well decorated lobby
- 24 hrs water supply.
- Common toilet for service staff.
- LED illumination for compound & staircases.

COMMON AREAS

- 5-passenger Auto Door MRL Lift.
- Waterproof non-fading exterior finish.
- Underground covered water drainage system.
- Free Interior Design advice.
- Guidance for Loan Facility.
- Decorative Lift Lobby.

STRUCTURE

- Earthquake-resistant RCC framed structure with pile Foundation & Premium quality steel & cement.
- Conventional Special Red brick for External & internal walls.

DOOR & WINDOW

- Sal wood frame.
- Solid core ISI Water Proof Flush Door.
- Teak Laminated Entrance door with Lock & Eyepiece.
- Internal rooms fitted with a lock, tower bolt.
- Flush Door for Toilets.
- Colour Coated Aluminum Sliding Windows for all rooms.
- Louver for all toilets.

PAINT

- Wall Care Putty for in-side Wall & Ceiling.
- Interior on common space:- Primer & best Quality Washable Paint.
- Exterior:- High-quality waterproof Cement/texture paint.
- Grill & Gate: High-quality enamel paint with Red oxidize Primer.



CE-1/B/60